



2022

Kansas State Legislative Scorecard

See how Members of Kansas's General Assembly are voting on economic growth issues.



Club for Growth Foundation is a 501(c)(3) non-profit organization focused on educating the public about the value of free markets, pro-growth policies, and economic prosperity.

State Scorecards are created by the Club for Growth Foundation to educate the public about the voting records of the legislators who serve in state legislatures. This is part of a larger scorecard project that the Club for Growth Foundation has created to educate the public about the economic positions taken by legislators in states across the country.

Our Mission

THE FOUNDATION
EDUCATES THE
PUBLIC ABOUT PRO-
GROWTH POLICIES.

THE FOUNDATION
CONDUCTS
COMPREHENSIVE
EXAMINATIONS OF
VOTING RECORDS.

THE FOUNDATION'S
GOAL IS TO INFORM
THE PUBLIC AND
BRING AWARENESS
TO LAWMAKERS.

METHODOLOGY
2022 KANSAS

KANSAS
SENATE
SNAPSHOT

KANSAS
SENATE
VOTES

KANSAS
SENATE
VOTE
DESCRIPTIONS

KANSAS
HOUSE
SNAPSHOT

KANSAS
HOUSE
VOTES

KANSAS
HOUSE
VOTE
DESCRIPTIONS

Methodology | Kansas 2022

Club for Growth Foundation publishes the scorecard study so the public can monitor the actions and the voting behavior of Kansas's elected state lawmakers on economic growth issues.

The Foundation conducted a comprehensive examination of each lawmaker's record on votes related to pro-growth policies and computed an Economic Growth Score on a scale of 0 to 100. A score of 100 indicates the highest support for pro-growth policies.

The Foundation examines legislative votes related to the Club's immediate pro-economic growth policy goals, including:

- Reducing or eliminating tax rates and enacting tax reform
- Limited government through limited spending and budget reform
- Regulatory reform and deregulation
- Ending abusive lawsuits through medical malpractice and tort reform
- Expanding school choice
- Implementing term limits

Not all of these policy goals will come up for a vote in each legislative session.

The Foundation also examines votes on bills that would directly harm these goals.

This scorecard is based on selected votes of importance to the Foundation, and does not include the complete voting record of any legislator. There are inherent limitations in judging the overall qualifications of any legislator based on a selected voting record, and the Foundation does not endorse or oppose any legislator for public office.

ABOUT THE FOUNDATION

METHODOLOGY
2022 KANSAS

KANSAS
SENATE
SNAPSHOT

KANSAS
SENATE
VOTES

KANSAS
SENATE
VOTE
DESCRIPTIONS

KANSAS
HOUSE
SNAPSHOT

KANSAS
HOUSE
RANKINGS

KANSAS
HOUSE
VOTE
DESCRIPTIONS

LEGISLATIVE ACTIONS CONSIDERED IN KANSAS IN 2022

The Foundation’s study examined over 460 floor votes and, in the end, included 13 Kansas House votes and 13 Kansas Senate votes.

COMPUTATION

Scores are computed on a scale of 0 to 100. Each vote or action in the rating is assigned a certain number of points depending on its relative importance. If a lawmaker casts a correct vote, the scorecard will denote it with that number. If a lawmaker casts an incorrect vote, the scorecard will denote that vote with a hyphen (-). Absences are not counted – signified as an “X” on the scorecard – though the Foundation reserves the right to do so if, in its judgment, a lawmaker’s position was otherwise discernible. If a lawmaker was not officially sworn into office at the time of a vote, the scorecard will denote that vote with an “I”.

To provide some additional guidance concerning the scores, each lawmaker was ranked. Aside from ties, lawmakers with 0% scores are, by default, ranked #125 in the

House and #40 in the Senate if all lawmakers are present. Scores and ranks cannot be directly compared between the House and Senate, as different votes were taken in each chamber. If applicable, the study also records a “Lifetime Score” for each lawmaker. This is a simple average of the scores from 2022 and all previous years where the lawmaker earned a score.

In some cases, a lawmaker was not present for enough votes for a meaningful score or ranking to be computed. In such cases “n.a.” for “not applicable” appears. In computing lifetime scores, years with “n.a.” listed instead of a score are not included. Comparing such scores to other members without “n.a.” years may be misleading.

ADDITIONAL FACTORS

A study of roll call votes on the floor of the Kansas House and Kansas Senate and legislative actions is just that. It cannot account for a lawmaker’s work in committee, advocacy in his party’s caucus meetings, and effectiveness as a leader in advocating pro-growth policies.

“Through the release of this series, the Club for Growth Foundation is looking at how state legislatures perform in terms of pro-growth policies. We believe that this scorecard will help inform citizens and entrepreneurs about who supports the policies that are good for economic prosperity.”

- DAVID McINTOSH
PRESIDENT, CLUB FOR GROWTH FOUNDATION

ABOUT THE
FOUNDATION

METHODOLOGY
2022 KANSAS

KANSAS
SENATE
SNAPSHOT

KANSAS
SENATE
VOTES

KANSAS
SENATE
VOTE
DESCRIPTIONS

KANSAS
HOUSE
SNAPSHOT

KANSAS
HOUSE
RANKINGS

KANSAS
HOUSE
VOTE
DESCRIPTIONS



40 MEMBERS

Kansas Senate Snapshot

29 Republicans

11 Democrats

0 Independent

0 Vacancies

Average Republican Score: 51%

Average Democrat Score: 29%



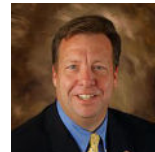
HIGHEST-RATED REPUBLICAN

Senator Caryn Tyson (SD-12) | 100%



LOWEST-RATED REPUBLICAN

Senator Jeff Longbine (SD-17) | 28%



HIGHEST-RATED DEMOCRAT

Senator Thomas Holland (SD-3) | 60%



LOWEST-RATED DEMOCRAT

Senator Tom Hawk (SD-22) | 18%

ABOUT THE FOUNDATION

METHODOLOGY
2022 KANSAS

**KANSAS
SENATE
SNAPSHOT**

KANSAS
SENATE
VOTES

KANSAS
SENATE
VOTE
DESCRIPTIONS

KANSAS
HOUSE
SNAPSHOT

KANSAS
HOUSE
VOTES

KANSAS
HOUSE
VOTE
DESCRIPTIONS

Kansas 2022 | Senate Scorecard

Name	District	Party	Score	Life-score	HB2106	HB2237	HB2239	HB2448	HB2510	HB2559	HB2567	HCR5014	SB199	SB267	SB347	SB444	SCR1620	Rank
PRO-GROWTH POSITION					Y	N	Y	Y	N	N	N	Y	Y	N	N	N	Y	
POINTS					6	8	6	6	11	4	6	6	8	10	11	10	8	
Alley, Larry	SD-32	R	40%	40%	6	-	6	6	-	-	-	6	8	-	-	-	8	15
Baumgardner, Molly	SD-37	R	58%	58%	6	X	6	6	-	X	-	6	8	-	11	-	8	10
Billinger, Richard	SD-40	R	40%	40%	6	-	6	6	-	-	-	6	8	-	-	-	8	15
Bowers, Elaine	SD-36	R	40%	40%	6	-	6	6	-	-	-	6	8	-	-	-	8	15
Claeys, J. R.	SD-24	R	40%	40%	6	-	6	6	-	-	-	6	8	-	-	-	8	15
Corson, Ethan	SD-07	D	28%	28%	6	-	6	-	-	-	6	-	-	-	-	10	-	31
Dietrich, Brenda	SD-20	R	32%	32%	6	-	6	6	-	-	-	6	8	-	-	-	-	28
Doll, John	SD-39	R	42%	42%	6	-	6	6	-	-	6	-	8	-	-	10	-	14
Erickson, Renee	SD-30	R	48%	48%	6	8	6	6	-	-	-	6	8	-	-	-	8	12
Fagg, Michael	SD-14	R	40%	40%	6	-	6	6	-	-	-	6	8	-	-	-	8	15
Faust-Goudeau, Oletha	SD-29	D	28%	28%	6	-	6	-	-	-	6	-	-	-	-	10	-	31
Francisco, Marci	SD-02	D	20%	20%	6	-	6	-	-	-	6	-	-	-	-	X	-	37
Gossage, Beverly	SD-09	R	48%	48%	6	8	6	6	-	-	-	6	8	-	-	-	8	12
Haley, David	SD-04	D	20%	20%	6	-	6	-	-	-	6	-	-	-	-	X	-	37
Hawk, Tom	SD-22	D	18%	18%	6	-	6	-	-	-	6	-	-	-	-	-	-	40
Hilderbrand, Richard	SD-13	R	84%	84%	6	-	6	6	11	4	-	6	8	X	11	10	8	4
Holland, Thomas	SD-03	D	60%	60%	6	-	6	-	11	-	6	-	-	10	11	10	-	8
Holscher, Cindy	SD-08	D	28%	28%	6	-	6	-	-	-	6	-	-	-	-	10	-	31
Kerschen, Dan	SD-26	R	35%	35%	6	-	6	6	-	-	-	6	X	-	-	-	8	27
Kloos, Richard	SD-19	R	40%	40%	6	-	6	6	-	-	-	6	8	-	-	-	8	15

Kansas 2022 | Senate Scorecard (Continued)

Name	District	Party	Score	Life-score	HB2106	HB2237	HB2239	HB2448	HB2510	HB2559	HB2567	HCR5014	SB199	SB267	SB347	SB444	SCR1620	Rank
PRO-GROWTH POSITION					Y	N	Y	Y	N	N	N	Y	Y	N	N	N	Y	
POINTS					6	8	6	6	11	4	6	6	8	10	11	10	8	
Longbine, Jeff	SD-17	R	28%	28%	6	-	X	6	-	-	-	6	8	-	-	-	-	31
Masterson, Ty	SD-16	R	40%	40%	6	-	6	6	-	-	-	6	8	-	-	-	8	15
McGinn, Carolyn	SD-31	R	30%	30%	6	-	6	6	-	-	-	X	8	-	-	-	X	30
O'Shea, Kristen	SD-18	R	32%	32%	6	-	6	6	-	-	-	6	8	-	-	-	-	28
Olson, Robert	SD-23	R	51%	51%	6	-	6	6	11	-	-	6	8	-	-	-	8	11
Peck, Virgil	SD-15	R	86%	86%	6	-	6	6	11	4	-	6	8	10	11	10	8	3
Petersen, Mike	SD-28	R	40%	40%	6	-	6	6	-	-	-	6	8	-	-	-	8	15
Petty, Pat	SD-06	D	20%	20%	6	-	6	-	-	-	6	-	-	-	-	X	-	37
Pittman, Jeffrey	SD-05	D	36%	36%	6	-	6	-	-	-	6	-	-	-	-	10	8	26
Pyle, Dennis	SD-01	R	81%	81%	6	-	6	6	11	4	6	6	8	10	-	10	8	5
Ryckman, Ronald	SD-38	R	40%	40%	6	-	6	6	-	-	-	6	8	-	-	-	8	15
Steffen, Mark	SD-34	R	59%	59%	6	-	6	6	-	4	X	6	8	-	11	-	8	9
Straub, Alicia	SD-33	R	91%	91%	6	-	6	6	11	4	X	6	8	10	11	10	8	2
Suellentrop, Gene	SD-27	R	72%	72%	X	X	6	6	-	-	-	6	8	X	11	10	8	6
Sykes, Dinah	SD-21	D	28%	28%	6	-	6	-	-	-	6	-	-	-	-	10	-	31
Thompson, Mike	SD-10	R	63%	63%	6	8	6	6	-	4	-	6	8	-	11	-	8	7
Tyson, Caryn	SD-12	R	100%	100%	6	X	6	6	11	4	6	6	8	10	11	10	8	1
Ware, Mary	SD-25	D	28%	28%	6	-	6	-	-	-	6	-	-	-	-	10	-	31
Warren, Kellie	SD-11	R	40%	40%	6	-	6	6	-	-	-	6	8	-	-	-	8	15
Wilborn, Richard	SD-35	R	40%	40%	6	-	6	6	-	-	-	6	8	-	-	-	8	15

Kansas 2022 | Senate Vote Descriptions

HB 2106

GROCERY TAX PHASE OUT

(CFGF SUPPORTS)

This bill ratchets down the state's sales tax on food over the course of three years. Specifically, the legislation reduces the sales and use tax on food from 6.5 percent to zero by January 1, 2025, and eliminates the food sales tax credit at the end of 2024. Kansas has the second highest sales tax on groceries in the nation behind Mississippi. While the bill does not eliminate municipal or county sales taxes on food, it is likely to save families hundreds of dollars annually on groceries amid historic inflation. The Kansas House passed the bill, 114-3, on April 28, 2023. The Kansas Senate passed it, 39-0, on April 27, 2022.

HB 2237

MASSIVE CRONY TAX CREDIT PACKAGE

(CFGF OPPOSES)

This bill enacts a slew of new and expanded tax credits for housing, historic structures,

and rural economic development. Specifically, the legislation creates the housing investor tax credit and affordable housing tax credit to centrally-plan housing development in rural areas of Kansas and expand low-income government housing. Additionally, the bill creates two new historic structure tax credits for up to 40 percent of qualified expenditures and eliminates the previous cap of \$3.75 million. Furthermore, the legislation subsidizes apartment renovations in Topeka and enacts a \$2 million loan guarantee program for rural housing renovations. The Kansas House passed the bill, 109-12, on April 26, 2022. The Kansas Senate passed it, 34-3, on April 25, 2022.

HB 2239

CUMBERSOME TAX REFORM PACKAGE

(CFGF SUPPORTS)

This bill attempts to enact various reforms in property, income, and sales taxes to lower the overall tax burden. Specifically, the legislation provides new accountability mechanisms

for property owners to ensure the state's revenue-neutral property tax remains in effect, empowers the Board of Tax Appeals with the ability to order property tax refunds or lower rates within specific subdivisions, allows eligible pass-through entities to elect to pay a 5.7 percent income tax at the entity level rather than the individual, and expands residential property tax exemption from \$20,000 to \$40,000. The legislation includes extraneous tax credit carveouts that appeared to be political tradeoffs rather than pro-growth tax reforms for school supplies, aviation, railroad infrastructure, and historic renovation while expanding the existing R&D credit from 6.5 percent to 10 percent of qualified expenditures. Despite those misguided policies, overall, the bill has a positive impact lowering hard-working Kansans' tax burden. The Kansas House passed the bill, 103-10, on April 1, 2022. The Kansas Senate passed the bill, 39-0, on the same day.

ABOUT THE FOUNDATION

METHODOLOGY 2022 KANSAS

KANSAS SENATE SNAPSHOT

KANSAS SENATE VOTES

KANSAS SENATE VOTE DESCRIPTIONS

KANSAS HOUSE SNAPSHOT

KANSAS HOUSE VOTES

KANSAS HOUSE VOTE DESCRIPTIONS

Kansas 2022 | Senate Vote Descriptions

HB 2448

VETO OVERRIDE ON WORK REQUIREMENTS (CFGF SUPPORTS)

This vote overrides Governor Kelly's veto of the legislature's common-sense food stamp reform bill. Specifically, the legislation requires the Department for Children and Families to assign all able-bodied adults without dependents between ages 18-49 working fewer than 30 hours per week enrolled in the food assistance program to an employment and training program. These reforms begin the process of curbing unnecessary enrollment and alleviating burdens on hardworking Kansans who ultimately foot the bill for federal food stamp programs. The Kansas House overrode the veto, 86-36, on April 28, 2022. The Kansas Senate overrode it, 29-11, on the same day. Governor Evers vetoed the bill.

HB 2510

BLOATED OMNIBUS APPROPRIATIONS PACKAGE (CFGF OPPOSES)

This bill implements significant spending increases for FY2022 and FY2023. Specifically,

the legislation adds \$390 million in back-dated FY2022 spending to pay off bonds and \$190 million in spending for FY2023, including \$36 million in federal ARPA funds to the Governor's office to hand out to well-connected entities and government-preferred corporate interests. The Kansas House passed the bill, 95-22, on April 28, 2022. The Kansas Senate passed it, 33-7, on the same day.

HB 2559

NEW BOLL WEEVIL AGRICULTURE TAX (CFGF OPPOSES)

This bill creates the Kansas Cotton Boll Weevil Program. Specifically, the legislation empowers the Boll Weevil Board to enter private property pending notification to inspect for boll weevils, levy a \$2 assessment per bale of cotton, and requires out-of-state cotton gins that serve as selling agents for cotton produced in Kansas to collect the assessment on behalf of the board. Additionally, the legislation imposes a mandate on cotton gins that requires annual reporting to the Boll Weevil Board on all assessments collected and paid. This is a targeted tax scheme

designed to empower government bureaucrats and serves as a form of check-off program to benefit niche industry interests at the expense of producers. The Kansas House passed the bill, 102-15, on March 31, 2022. The Kansas Senate passed it, 32-7, on the same day.

HB 2567

BIG SPENDING EDUCATION APPROPRIATIONS (CFGF OPPOSES)

This bill appropriates \$6.4 billion for FY2023 education expenditures. Specifically, the legislation includes a substantial \$400 million increase in spending over FY2022 levels and \$43 million in additional funding to "make up" for recent property tax relief. While the legislation includes important school choice expansions, the continued use of federal ARPA funds to artificially inflate spending baselines throughout the broader budget jeopardizes hardworking Kansans with future tax-and-spend initiatives. The Kansas House passed the bill, 75-45, on April 28, 2022. The Kansas Senate passed it, 24-14, on the same day.

ABOUT THE
FOUNDATION

METHODOLOGY
2022 KANSAS

KANSAS
SENATE
SNAPSHOT

KANSAS
SENATE
VOTES

KANSAS
SENATE
VOTE
DESCRIPTIONS

KANSAS
HOUSE
SNAPSHOT

KANSAS
HOUSE
VOTES

KANSAS
HOUSE
VOTE
DESCRIPTIONS

Kansas 2022 | Senate Vote Descriptions

HCR 5014

REGULATORY REFORM CONSTITUTIONAL AMENDMENT

(CFGF SUPPORTS)

This resolution amends the Kansas Constitution to provide for the state legislature to repeal agency regulations. Specifically, the resolution allows an agency regulation or rule to be repealed or suspended with a simple majority vote in each legislative chamber. Conceptually similar to the federal REINS Act proposal, this amendment provides an important check on state agencies should they attempt to impose onerous regulations outside or within the confines of statutory law. The Kansas House passed the resolution, 85-39, on February 21, 2022. The Kansas Senate passed it, 27-12, on March 23, 2022.

SB 199

DEREGULATED HEALTH INSURANCE OPTION

(CFGF SUPPORTS)

This bill implements so-called “short-term limited duration” plans into the Kansas health insurance marketplace. Specifically, the legislation expands the duration of the plans from 12 months to

36 months and eliminates the onerous, cost-driving insurance regulations implemented under Obamacare to provide a more affordable option for consumers. The guaranteed issue and community rating regulations mandated by Obamacare have resulted in a 40 percent average increase in annual premiums for Kansans on employer-provided insurance since in 2010—well over \$3,300 per year. Short-term catastrophic plans free of the Obamacare regulatory apparatus provide a cheaper market alternative. The Kansas House passed the bill, 73-49, on March 23, 2022. The Kansas Senate passed it, 28-11, on March 29, 2022. Governor Kelly vetoed the bill.

SB 267

MULTI-YEAR MEGA APPROPRIATIONS BOONDOGGLE

(CFGF OPPOSES)

This bill, one of three budget bills, implements significant spending increases for FY2022 and FY2023. Specifically, the legislation adds \$1.2 billion in back-dated FY2022 spending and appropriates \$16 billion in spending for FY2023,

including \$114 million in direct ARPA subsidies to colleges and universities, \$75 million in ARPA slush fund money to be doled out by the Governor, expands Medicaid, \$65 million in new government housing initiatives, and \$145 million for a 5 percent across-the-board state employee pay raise. As hardworking Kansans face record inflation and skyrocketing costs, lawmakers should refrain from profligate spending measures and using federal dollars to create artificial baselines guaranteed to lead to future burdens on taxpayers. The Kansas House passed the bill, 104-12, on April 1, 2022. The Kansas Senate passed it, 33-5, on the same day.

SB 347

MASSIVE CORPORATE CRONYISM PROGRAM

(CFGF OPPOSES)

This bill creates a series of new crony incentives to lure specific manufacturing, aerospace, and distribution businesses to Kansas. Specifically, the legislation provides for a new investment tax credit equal to 15 percent of a qualified business’ investments up to a maximum of \$100 million. Approval of the credit is put in the hands of the

ABOUT THE FOUNDATION

METHODOLOGY 2022 KANSAS

KANSAS SENATE SNAPSHOT

KANSAS SENATE VOTES

KANSAS SENATE VOTE DESCRIPTIONS

KANSAS HOUSE SNAPSHOT

KANSAS HOUSE VOTES

KANSAS HOUSE VOTE DESCRIPTIONS

Kansas 2022 | Senate Vote Descriptions

Governor and State Finance Council. Additionally, the bill provides the Commerce Secretary with the authority to determine the percentage of the credit that is refundable. Furthermore, the bill allows corporations to retain 65 percent of Kansas payroll withholding taxes for up to a decade, apply for payroll reimbursement, and lowers the state's corporate tax rate for eligible entities down to zero. This is pure cronyism aimed at using the resources of hard-working Kansans for the benefit of a handful of well-connected business interests. The Kansas House passed it, 80-41, on February 8, 2022. The Kansas Senate passed it, 31-9, on February 9, 2022.

SB 444

MASSIVE COMBINED APPROPRIATIONS OMNIBUS

(CFGF OPPOSES)

This bill appropriates \$22.8 billion in combined appropriations for FY 2023. Specifically, the legislation siphons off \$600 million in “rainy day” spending for government bureaucrats to spend on programs at a future date and includes a \$263 million increase—roughly 3 percent—

over Governor Kelly’s recommended spending levels for FY 2023. As hardworking Kansan families and households face historic inflation and skyrocketing prices, lawmakers should be reducing overall spending and alleviating this pain instead of contributing to it. The Kansas Senate passed the bill, 23-14, on March 16, 2023. The Kansas House did not take it up.

SCR 1620

TAXPAYER PROTECTION CONSTITUTIONAL AMENDMENT

(CFGF SUPPORTS)

This resolution establishes a ballot initiative to amend the Kansas Constitution. Specifically, the amendment requires a three-fifths supermajority of House and Senate lawmakers to impose new or increased taxes. This is an important and worthwhile safeguard to curb attempted tax increases by raising the threshold required to pilfer from hardworking Kansans and taxpayers. The Kansas Senate failed to pass the resolution, 25-14, on March 23, 2022. The Kansas House did not take it up.

ABOUT THE
FOUNDATION

METHODOLOGY
2022 KANSAS

KANSAS
SENATE
SNAPSHOT

KANSAS
SENATE
VOTES

KANSAS
SENATE
VOTE
DESCRIPTIONS

KANSAS
HOUSE
SNAPSHOT

KANSAS
HOUSE
VOTES

KANSAS
HOUSE
VOTE
DESCRIPTIONS



125 MEMBERS

Kansas House Snapshot

86 Republicans

39 Democrats

0 Independent

0 Vacancies

Average Republican Score: 54%

Average Democrat Score: 23%



HIGHEST-RATED REPUBLICAN

Rep. Francis Averkamp (HD-61) | 100%



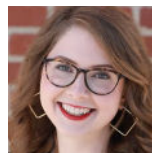
LOWEST-RATED REPUBLICAN

Rep. Susan Concannon (HD-107) | 19%



HIGHEST-RATED DEMOCRAT

Rep. Henry Helgeson (HD-83) | 68%



LOWEST-RATED DEMOCRAT

Rep. Lindsay Vaughn (HD-22) | 8%

ABOUT THE FOUNDATION

METHODOLOGY 2022 KANSAS

KANSAS SENATE SNAPSHOT

KANSAS SENATE VOTES

KANSAS SENATE VOTE DESCRIPTIONS

KANSAS HOUSE SNAPSHOT

KANSAS HOUSE VOTES

KANSAS HOUSE VOTE DESCRIPTIONS

Kansas 2022 | House Scorecard

Name	District	Party	Score	Lifescore	HB2106	HB2237	HB2239	HB2448	HB2510	HB2559	HB2567	HB2615	HCR5014	SB199	SB267	SB 267 Amdt	SB347	Rank
PRO-GROWTH POSITION					Y	N	Y	Y	N	N	N	Y	Y	Y	N	N	N	
POINTS					6	8	6	6	11	4	6	8	6	8	10	10	11	
Alcala, John	HD-057	D	18%	18%	6	-	6	-	-	-	6	-	-	-	-	-	-	100
Amyx, Mike	HD-045	D	18%	18%	6	-	6	-	-	-	6	-	-	-	-	-	-	100
Anderson, Avery	HD-072	R	61%	61%	6	-	6	6	-	-	-	8	6	8	-	10	11	20
Arnberger, Tory	HD-112	R	61%	61%	6	-	6	6	11	-	-	8	6	8	-	10	-	20
Awerkamp, Francis	HD-061	R	100%	100%	6	8	6	6	11	4	6	8	6	8	10	10	11	1
Baker, Dave	HD-068	R	39%	39%	6	-	6	6	11	-	6	-	-	-	-	-	X	75
Ballard, Barbara	HD-044	D	18%	18%	6	-	6	-	-	-	6	-	-	-	-	-	-	100
Barker, John	HD-070	R	50%	50%	6	-	6	6	-	-	-	8	6	8	-	10	-	39
Bergkamp, Brian	HD-093	R	57%	57%	-	8	-	6	-	-	-	8	6	8	-	10	11	34
Bergquist, Emil	HD-091	R	61%	61%	6	-	6	6	-	-	-	8	6	8	-	10	11	20
Blex, Douglas	HD-012	R	61%	61%	6	-	6	6	-	-	-	8	6	8	-	10	11	20
Borjon, Jesse	HD-052	R	38%	38%	6	-	X	6	-	-	-	8	6	-	-	10	-	77
Burris, Jesse	HD-082	R	86%	86%	6	-	6	6	11	4	-	8	6	8	10	10	11	7
Burroughs, Tom	HD-033	D	27%	27%	X	-	6	-	X	X	6	-	X	8	-	-	-	96
Byers, Stephanie	HD-086	D	29%	29%	6	-	6	-	11	-	6	-	-	-	-	-	-	92
Carlin, Sydney	HD-066	D	18%	18%	6	-	6	-	-	-	6	-	-	-	-	-	-	100
Carlson, Susan	HD-064	R	30%	30%	6	-	6	6	-	-	6	-	6	-	-	-	-	91
Carmichael, John	HD-092	D	44%	44%	6	-	6	-	11	4	6	-	-	-	-	-	11	61
Carpenter, Will	HD-075	R	50%	50%	6	-	6	6	-	-	-	8	6	8	-	10	-	39
Clark, Lonnie	HD-065	R	40%	40%	6	-	6	6	-	-	-	8	6	8	-	-	-	72
Clayton, Stephanie	HD-019	D	18%	18%	6	-	6	-	-	-	6	-	-	-	-	-	-	100

ABOUT THE FOUNDATION

METHODOLOGY 2022 KANSAS

KANSAS SENATE SNAPSHOT

KANSAS SENATE VOTES

KANSAS SENATE VOTE DESCRIPTIONS

KANSAS HOUSE SNAPSHOT

KANSAS HOUSE VOTES

KANSAS HOUSE VOTE DESCRIPTIONS

Kansas 2022 | House Scorecard (Continued)

Name	District	Party	Score	Lifescore	HB2106	HB2237	HB2239	HB2448	HB2510	HB2559	HB2567	HB2615	HCR5014	SB199	SB267	SB 267 Amdt	SB347	Rank
PRO-GROWTH POSITION					Y	N	Y	Y	N	N	N	Y	Y	Y	N	N	N	
POINTS					6	8	6	6	11	4	6	8	6	8	10	10	11	
Clifford, Bill	HD-122	R	48%	48%	6	-	6	6	-	-	6	-	6	8	-	10	-	60
Coleman, Aaron	HD-037	D	44%	44%	6	-	X	-	-	-	6	X	X	X	X	X	11	61
Collins, Kenneth	HD-002	R	61%	61%	6	-	6	6	-	-	-	8	6	8	-	10	11	20
Concannon, Susan	HD-107	R	19%	19%	6	-	X	6	-	-	-	-	6	-	-	-	-	99
Corbet, Ken	HD-054	R	61%	61%	6	-	6	6	-	-	-	8	6	8	-	10	11	20
Croft, Chris	HD-008	R	50%	50%	6	-	6	6	-	-	-	8	6	8	-	10	-	39
Curtis, Pam	HD-032	D	18%	18%	6	-	6	-	-	-	6	-	-	-	-	-	-	100
Delperdang, Leo	HD-094	R	73%	73%	6	8	6	6	11	4	-	8	6	8	-	10	-	12
Dodson, Mike	HD-067	R	42%	42%	6	-	6	6	-	-	-	8	6	-	-	10	-	68
Donohoe, Owen	HD-039	R	70%	70%	6	-	6	6	11	-	-	8	X	8	-	10	11	15
Ellis, Ronald	HD-047	R	61%	61%	6	-	6	6	-	-	-	8	6	8	-	10	11	20
Eplee, John	HD-063	R	40%	40%	6	-	6	6	-	-	6	-	6	-	-	10	-	72
Esau, Charlotte	HD-014	R	72%	72%	6	-	6	6	11	-	-	8	6	8	-	10	11	13
Estes, Susan	HD-087	R	69%	69%	6	-	X	6	-	X	-	8	6	8	X	10	11	16
Fairchild, Brett	HD-113	R	88%	88%	6	8	-	6	11	4	-	8	6	8	10	10	11	6
Featherston, Linda	HD-016	D	12%	12%	6	-	-	-	-	-	6	-	-	-	-	-	-	118
Finch, Blaine	HD-059	R	44%	44%	6	-	6	6	-	-	-	8	-	8	-	10	-	61
Finney, Gail	HD-084	D	37%	37%	6	-	X	-	11	X	6	-	X	-	X	-	X	79
Francis, Shannon	HD-125	R	50%	50%	6	-	6	6	-	-	-	8	6	8	-	10	-	39
French, David	HD-040	R	71%	71%	6	-	6	6	-	-	-	8	6	8	10	10	11	14
Garber, Randy	HD-062	R	94%	94%	6	8	6	6	11	4	-	8	6	8	10	10	11	2

ABOUT THE FOUNDATION

METHODOLOGY 2022 KANSAS

KANSAS SENATE SNAPSHOT

KANSAS SENATE VOTES

KANSAS SENATE VOTE DESCRIPTIONS

KANSAS HOUSE SNAPSHOT

KANSAS HOUSE VOTES

KANSAS HOUSE VOTE DESCRIPTIONS

Kansas 2022 | House Scorecard (Continued)

Name	District	Party	Score	Lifecore	HB2106	HB2237	HB2239	HB2448	HB2510	HB2559	HB2567	HB2615	HCR5014	SB199	SB267	SB 267 Amdt	SB347	Rank
PRO-GROWTH POSITION					Y	N	Y	Y	N	N	N	Y	Y	Y	N	N	N	
POINTS					6	8	6	6	11	4	6	8	6	8	10	10	11	
Gartner, Jim	HD-053	D	12%	12%	-	-	6	-	-	-	6	-	-	-	-	-	-	118
Haswood, Christina	HD-010	D	29%	29%	6	-	6	-	11	-	6	-	-	-	-	-	-	92
Hawkins, Dan	HD-100	R	50%	50%	6	-	6	6	-	-	-	8	6	8	-	10	-	39
Helgerson, Henry	HD-083	D	68%	68%	6	8	6	6	11	4	6	-	-	-	10	-	11	18
Helmer, Cheryl	HD-079	R	86%	86%	X	-	X	6	X	X	X	8	6	8	X	10	11	7
Henderson, Broderick	HD-035	D	35%	35%	6	-	6	-	11	-	6	-	X	-	-	-	X	80
Highberger, Dennis	HD-046	D	12%	12%	6	-	-	-	-	-	6	-	-	-	-	-	-	118
Highland, Ron	HD-051	R	53%	53%	X	-	6	6	X	-	-	8	6	8	-	10	-	37
Hoffman, Kyle	HD-116	R	50%	50%	6	-	6	6	-	-	-	8	6	8	-	10	-	39
Hoheisel, Nick	HD-097	R	44%	44%	6	-	6	6	-	-	-	8	6	8	-	X	-	61
Houser, Michael	HD-001	R	84%	84%	6	-	6	6	11	4	-	8	6	8	10	10	X	9
Howe, Steven	HD-071	R	61%	61%	6	-	6	6	-	-	-	8	6	8	-	10	11	20
Howell, Leah	HD-081	R	50%	50%	6	-	6	6	-	-	-	8	6	8	-	10	-	39
Howerton, Cyndi	HD-098	R	50%	50%	6	-	6	6	-	-	-	8	6	8	-	10	-	39
Hoye, Jo Ella	HD-017	D	18%	18%	6	-	6	-	-	-	6	-	-	-	-	-	-	100
Huebert, Steven	HD-090	R	61%	61%	6	-	6	6	-	-	-	8	6	8	-	10	11	20
Humphries, Susan	HD-099	R	50%	50%	6	-	6	6	-	-	-	8	6	8	-	10	-	39
Jacobs, Trevor	HD-004	R	94%	94%	6	8	6	6	11	4	-	8	6	8	10	10	11	2
Johnson, Steven	HD-108	R	50%	50%	6	-	6	6	-	-	-	8	6	8	-	10	-	39
Johnson, Timothy	HD-038	R	61%	61%	6	-	6	6	-	-	-	8	6	8	-	10	11	20
Kelly, Jim	HD-011	R	34%	34%	6	-	6	6	-	-	-	-	6	-	-	10	-	81

ABOUT THE FOUNDATION

METHODOLOGY 2022 KANSAS

KANSAS SENATE SNAPSHOT

KANSAS SENATE VOTES

KANSAS SENATE VOTE DESCRIPTIONS

KANSAS HOUSE SNAPSHOT

KANSAS HOUSE VOTES

KANSAS HOUSE VOTE DESCRIPTIONS

Kansas 2022 | House Scorecard (Continued)

Name	District	Party	Score	Lifecore	HB2106	HB2237	HB2239	HB2448	HB2510	HB2559	HB2567	HB2615	HCR5014	SB199	SB267	SB 267 Amdt	SB347	Rank
PRO-GROWTH POSITION					Y	N	Y	Y	N	N	N	Y	Y	Y	N	N	N	
POINTS					6	8	6	6	11	4	6	8	6	8	10	10	11	
Kessler, Tom	HD-096	R	50%	50%	6	-	6	6	-	-	-	8	6	8	-	10	-	39
Kuether, Annie	HD-055	D	13%	13%	-	-	6	-	-	-	6	-	X	-	-	-	-	116
Landwehr, Brenda	HD-105	R	50%	50%	6	-	6	6	-	-	-	8	6	8	-	10	-	39
Lee-Hahn, Tatum	HD-117	R	94%	94%	6	8	6	6	11	4	-	8	6	8	10	10	11	2
Long, Martin	HD-124	R	42%	42%	6	-	6	6	-	-	-	-	6	8	-	10	-	68
Lynn, Megan	HD-049	R	38%	38%	6	-	6	6	-	-	-	-	X	8	-	10	-	77
Mason, Les	HD-073	R	54%	54%	6	-	6	6	-	4	-	8	6	8	-	10	-	36
Meyer, Heather	HD-029	D	29%	29%	6	-	6	-	-	-	6	-	-	-	-	-	11	92
Miller, Vic	HD-058	D	18%	18%	6	-	-	-	-	-	6	-	6	-	-	-	-	100
Minnix, Jim	HD-118	R	40%	40%	6	-	6	6	-	-	-	8	6	8	-	-	-	72
Moser, Lisa	HD-106	R	50%	50%	6	-	X	6	-	-	-	8	6	-	-	10	11	39
Murphy, Michael	HD-114	R	79%	79%	6	8	6	6	-	-	-	8	6	8	10	10	11	10
Neelly, Lance	HD-042	R	61%	61%	6	-	6	6	-	-	-	8	6	8	-	10	11	20
Neighbor, Cindy	HD-018	D	18%	18%	6	-	6	-	-	-	6	-	-	-	-	-	-	100
Newland, Joe	HD-013	R	53%	53%	6	-	6	6	-	-	-	-	6	8	-	10	11	37
Ohaebosim, KC	HD-089	D	33%	33%	6	-	6	-	11	4	6	-	-	-	-	-	-	84
Orr, Boyd	HD-115	R	39%	39%	6	-	6	6	-	-	-	-	-	-	-	10	11	75
Osman, Dan	HD-048	D	33%	33%	6	-	6	-	11	4	6	-	-	-	-	-	-	84
Ousley, Jarrod	HD-024	D	13%	13%	6	X	-	-	-	-	6	-	-	-	-	-	-	116
Owens, Stephen	HD-074	R	50%	50%	6	-	6	6	-	-	-	8	6	8	-	10	-	39
Patton, Fred	HD-050	R	43%	43%	6	-	X	6	-	-	-	-	6	8	X	10	-	65

ABOUT THE FOUNDATION

METHODOLOGY 2022 KANSAS

KANSAS SENATE SNAPSHOT

KANSAS SENATE VOTES

KANSAS SENATE VOTE DESCRIPTIONS

KANSAS HOUSE SNAPSHOT

KANSAS HOUSE VOTES

KANSAS HOUSE VOTE DESCRIPTIONS

Kansas 2022 | House Scorecard (Continued)

Name	District	Party	Score	Lifecore	HB2106	HB2237	HB2239	HB2448	HB2510	HB2559	HB2567	HB2615	HCR5014	SB199	SB267	SB 267 Amdt	SB347	Rank
PRO-GROWTH POSITION					Y	N	Y	Y	N	N	N	Y	Y	Y	N	N	N	
POINTS					6	8	6	6	11	4	6	8	6	8	10	10	11	
Penn, Patrick	HD-085	R	50%	50%	6	-	6	6	-	-	-	8	6	8	-	10	-	39
Poetter, Samantha	HD-006	R	n/a	n/a	X	8	X	6	X	X	X	X	6	X	X	X	11	
Poskin, Mari-Lynn	HD-020	D	18%	18%	6	-	6	-	-	-	6	-	-	-	-	-	-	100
Probst, Jason	HD-102	D	43%	43%	6	-	6	-	-	-	6	-	6	8	-	-	11	65
Proctor, Patrick	HD-041	R	50%	50%	6	-	6	6	-	-	-	8	6	8	-	10	-	39
Proehl, Richard	HD-007	R	34%	34%	6	-	6	6	-	-	-	-	6	-	-	10	-	81
Rahjes, Ken	HD-110	R	42%	42%	6	-	6	6	-	-	-	-	6	8	-	10	-	68
Ralph, Bradley	HD-119	R	42%	42%	6	-	6	6	-	-	-	-	6	8	-	10	-	68
Resman, John	HD-121	R	50%	50%	6	-	6	6	-	-	-	8	6	8	-	10	-	39
Rhiley, Bill	HD-080	R	75%	75%	6	-	6	6	-	4	-	8	6	8	10	10	11	11
Ruiz, Louis	HD-031	D	17%	17%	X	X	6	-	X	-	6	-	X	-	-	-	-	114
Ruiz, Susan	HD-023	D	18%	18%	6	-	6	-	-	-	6	-	-	-	-	-	-	100
Ryckman, Ron	HD-078	R	50%	50%	6	-	6	6	-	-	-	8	6	8	-	10	-	39
Samsel, Mark	HD-005	R	31%	31%	6	-	-	6	-	-	6	-	X	-	-	-	11	89
Sanders, Clarke	HD-069	R	61%	61%	6	-	6	6	-	-	-	8	6	8	-	10	11	20
Sawyer, Tom	HD-095	D	18%	18%	6	-	6	-	-	-	6	-	-	-	-	-	-	100
Schmidt, Chuck	HD-088	D	15%	15%	6	-	X	-	-	X	6	-	-	-	X	-	-	115
Schreiber, Mark	HD-060	R	28%	28%	6	X	6	6	-	-	6	-	X	-	-	-	-	95
Seiwert, Joe	HD-101	R	69%	69%	6	8	6	6	-	-	-	8	6	8	-	10	11	16
Smith, Adam	HD-120	R	32%	32%	6	-	6	6	-	-	-	-	6	8	-	-	-	87
Smith, Charles	HD-003	R	43%	43%	6	-	6	6	-	-	-	-	6	8	-	-	11	65

ABOUT THE FOUNDATION

METHODOLOGY 2022 KANSAS

KANSAS SENATE SNAPSHOT

KANSAS SENATE VOTES

KANSAS SENATE VOTE DESCRIPTIONS

KANSAS HOUSE SNAPSHOT

KANSAS HOUSE VOTES

KANSAS HOUSE VOTE DESCRIPTIONS

Kansas 2022 | House Scorecard (Continued)

Name	District	Party	Score	Lifecore	HB2106	HB2237	HB2239	HB2448	HB2510	HB2559	HB2567	HB2615	HCR5014	SB199	SB267	SB 267 Amdt	SB347	Rank
PRO-GROWTH POSITION					Y	N	Y	Y	N	N	N	Y	Y	Y	N	N	N	
POINTS					6	8	6	6	11	4	6	8	6	8	10	10	11	
Smith, Eric	HD-076	R	32%	32%	6	-	6	6	-	-	-	X	6	X	-	X	-	87
Stogsdill, Jerry	HD-021	D	12%	12%	6	-	-	-	-	-	6	-	-	-	-	-	-	118
Sutton, Bill	HD-043	R	67%	67%	X	X	6	X	X	4	X	8	6	8	-	10	-	19
Tarwater, Sean	HD-027	R	50%	50%	6	-	6	6	-	-	-	8	6	8	-	10	-	39
Thomas, Adam	HD-026	R	61%	61%	6	-	6	6	-	-	-	8	6	8	-	10	11	20
Thompson, Kent	HD-009	R	33%	33%	6	-	6	6	-	X	-	-	6	8	-	-	-	84
Toplikar, John	HD-015	R	61%	61%	6	-	6	6	-	-	-	8	6	8	-	10	11	20
Turner, Carl	HD-028	R	55%	55%	6	-	-	6	-	-	-	8	6	8	-	10	11	35
Vaughn, Lindsay	HD-022	D	8%	8%	X	-	6	X	X	-	X	-	-	-	-	-	-	123
Victors, Ponka-We	HD-103	D	n/a	n/a	X	-	X	X	X	-	X	-	X	-	X	-	-	
Waggoner, Paul	HD-104	R	90%	90%	6	8	6	6	11	-	-	8	6	8	10	10	11	5
Wasinger, Barbara	HD-111	R	50%	50%	6	-	6	6	-	-	-	8	6	8	-	10	-	39
Waymaster, Troy	HD-109	R	34%	34%	6	-	6	6	-	-	-	-	6	-	-	10	-	81
Weigel, Virgil	HD-056	D	26%	26%	6	-	6	-	-	-	6	-	-	8	-	-	-	97
Wheeler, John	HD-123	R	24%	24%	6	-	6	6	-	-	6	-	-	-	-	-	-	98
Williams, Kristey	HD-077	R	50%	50%	6	-	6	6	-	-	-	8	6	8	-	10	-	39
Winn, Valdenia	HD-034	D	31%	31%	6	-	X	-	11	X	6	-	X	-	X	-	-	89
Wolfe Moore, Kathy	HD-036	D	18%	18%	6	-	6	-	-	-	6	-	-	-	-	-	-	100
Woodard, Brandon	HD-030	D	18%	18%	6	-	6	-	-	-	6	-	-	-	-	-	-	100
Xu, Rui	HD-025	D	12%	12%	6	-	-	-	-	-	6	-	-	-	-	-	-	118

ABOUT THE FOUNDATION

METHODOLOGY 2022 KANSAS

KANSAS SENATE SNAPSHOT

KANSAS SENATE VOTES

KANSAS SENATE VOTE DESCRIPTIONS

KANSAS HOUSE SNAPSHOT

KANSAS HOUSE VOTES

KANSAS HOUSE VOTE DESCRIPTIONS

Kansas 2022 | House Vote Descriptions

HB 2106

GROCERY TAX PHASE OUT

(CFGF SUPPORTS)

This bill ratchets down the state's sales tax on food over the course of three years. Specifically, the legislation reduces the sales and use tax on food from 6.5 percent to zero by January 1, 2025, and eliminates the food sales tax credit at the end of 2024. Kansas has the second highest sales tax on groceries in the nation behind Mississippi. While the bill does not eliminate municipal or county sales taxes on food, it is likely to save families hundreds of dollars annually on groceries amid historic inflation. The Kansas House passed the bill, 114-3, on April 28, 2023. The Kansas Senate passed it, 39-0, on April 27, 2022.

HB 2237

MASSIVE CRONY TAX CREDIT PACKAGE

(CFGF OPPOSES)

This bill enacts a slew of new and expanded tax credits for housing, historic structures,

and rural economic development. Specifically, the legislation creates the housing investor tax credit and affordable housing tax credit to centrally-plan housing development in rural areas of Kansas and expand low-income government housing. Additionally, the bill creates two new historic structure tax credits for up to 40 percent of qualified expenditures and eliminates the previous cap of \$3.75 million. Furthermore, the legislation subsidizes apartment renovations in Topeka and enacts a \$2 million loan guarantee program for rural housing renovations. The Kansas House passed the bill, 109-12, on April 26, 2022. The Kansas Senate passed it, 34-3, on April 25, 2022.

HB 2239

CUMBERSOME TAX REFORM PACKAGE

(CFGF SUPPORTS)

This bill attempts to enact various reforms in property, income, and sales taxes to lower the overall tax burden. Specifically, the legislation provides new accountability mechanisms

for property owners to ensure the state's revenue-neutral property tax remains in effect, empowers the Board of Tax Appeals with the ability to order property tax refunds or lower rates within specific subdivisions, allows eligible pass-through entities to elect to pay a 5.7 percent income tax at the entity level rather than the individual, and expands residential property tax exemption from \$20,000 to \$40,000. The legislation includes extraneous tax credit carveouts that appeared to be political tradeoffs rather than pro-growth tax reforms for school supplies, aviation, railroad infrastructure, and historic renovation while expanding the existing R&D credit from 6.5 percent to 10 percent of qualified expenditures. Despite those misguided policies, overall, the bill has a positive impact lowering hard-working Kansans' tax burden. The Kansas House passed the bill, 103-10, on April 1, 2022. The Kansas Senate passed the bill, 39-0, on the same day.

ABOUT THE FOUNDATION

METHODOLOGY 2022 KANSAS

KANSAS SENATE SNAPSHOT

KANSAS SENATE VOTES

KANSAS SENATE VOTE DESCRIPTIONS

KANSAS HOUSE SNAPSHOT

KANSAS HOUSE VOTES

KANSAS HOUSE VOTE DESCRIPTIONS



Kansas 2022 | House Vote Descriptions

HB 2448

VETO OVERRIDE ON WORK REQUIREMENTS (CFGF SUPPORTS)

This vote overrides Governor Kelly's veto of the legislature's common-sense food stamp reform bill. Specifically, the legislation requires the Department for Children and Families to assign all able-bodied adults without dependents between ages 18-49 working fewer than 30 hours per week enrolled in the food assistance program to an employment and training program. These reforms begin the process of curbing unnecessary enrollment and alleviating burdens on hardworking Kansans who ultimately foot the bill for federal food stamp programs. The Kansas House overrode the veto, 86-36, on April 28, 2022. The Kansas Senate overrode it, 29-11, on the same day. Governor Evers vetoed the bill.

HB 2510

BLOATED OMNIBUS APPROPRIATIONS PACKAGE (CFGF OPPOSES)

This bill implements significant spending increases for FY2022 and FY2023. Specifically, the legislation adds \$390 million in back-dated FY2022 spending to pay off bonds and \$190 million in spending for FY2023, including \$36 million in federal ARPA funds to the Governor's office to hand out to well-connected entities and government-preferred corporate interests. The Kansas House passed the bill, 95-22, on April 28, 2022. The Kansas Senate passed it, 33-7, on the same day.

HB 2559

NEW BOLL WEEVIL AGRICULTURE TAX (CFGF OPPOSES)

This bill creates the Kansas Cotton Boll Weevil Program. Specifically, the legislation empowers the Boll Weevil Board to enter private property pending notification to inspect for boll weevils, levy a \$2 assessment per bale of cotton, and

requires out-of-state cotton gins that serve as selling agents for cotton produced in Kansas to collect the assessment on behalf of the board. Additionally, the legislation imposes a mandate on cotton gins that requires annual reporting to the Boll Weevil Board on all assessments collected and paid. This is a targeted tax scheme designed to empower government bureaucrats and serves as a form of check-off program to benefit niche industry interests at the expense of producers. The Kansas House passed the bill, 102-15, on March 31, 2022. The Kansas Senate passed it, 32-7, on the same day.

HB 2567

BIG SPENDING EDUCATION APPROPRIATIONS (CFGF OPPOSES)

This bill appropriates \$6.4 billion for FY2023 education expenditures. Specifically, the legislation includes a substantial \$400 million increase in spending over FY2022 levels and \$43 million in additional funding to "make up" for recent property tax relief. While the legislation

ABOUT THE
FOUNDATION

METHODOLOGY
2022 KANSAS

KANSAS
SENATE
SNAPSHOT

KANSAS
SENATE
VOTES

KANSAS
SENATE
VOTE
DESCRIPTIONS

KANSAS
HOUSE
SNAPSHOT

KANSAS
HOUSE
VOTES

KANSAS
HOUSE
VOTE
DESCRIPTIONS

Kansas 2022 | House Vote Descriptions

includes important school choice expansions, the continued use of federal ARPA funds to artificially inflate spending baselines throughout the broader budget jeopardizes hardworking Kansans with future tax-and-spend initiatives. The Kansas House passed the bill, 75-45, on April 28, 2022. The Kansas Senate passed it, 24-14, on the same day.

HB 2615

SIGNIFICANT SCHOOL CHOICE EXPANSION (CFGF SUPPORTS)

This bill opens up enrollment for students to attend schools outside their zip codes in any part of the state of Kansas, expanding some form of school choice to over 720,000 students. Specifically, the legislation requires that school districts enact capacity limits, accept the transfer of a nonresident student so long as capacity is available, and prohibit the charging of additional tuition or fees separate from existing fees for students who reside in the district. Further empowering parents, not government schools, is the best way to

provide quality education for students stuck in failing school systems. The Kansas House passed the bill, 63-59, on March 23, 2022. The Kansas Senate did not take it up.

SB 199

DEREGULATED HEALTH INSURANCE OPTION (CFGF SUPPORTS)

This bill implements so-called “short-term limited duration” plans into the Kansas health insurance marketplace. Specifically, the legislation expands the duration of the plans from 12 months to 36 months and eliminates the onerous, cost-driving insurance regulations implemented under Obamacare to provide a more affordable option for consumers. The guaranteed issue and community rating regulations mandated by Obamacare have resulted in a 40 percent average increase in annual premiums for Kansans on employer-provided insurance since in 2010—well over \$3,300 per year. Short-term catastrophic plans free of the Obamacare regulatory apparatus provide a cheaper market alternative. The

Kansas House passed the bill, 73-49, on March 23, 2022. The Kansas Senate passed it, 28-11, on March 29, 2022. Governor Kelly vetoed the bill.

SB 267

MULTI-YEAR MEGA APPROPRIATIONS BOONDOGGLE (CFGF OPPOSES)

This bill, one of three budget bills, implements significant spending increases for FY2022 and FY2023. Specifically, the legislation adds \$1.2 billion in back-dated FY2022 spending and appropriates \$16 billion in spending for FY2023, including \$114 million in direct ARPA subsidies to colleges and universities, \$75 million in ARPA slush fund money to be doled out by the Governor, expands Medicaid, \$65 million in new government housing initiatives, and \$145 million for a 5 percent across-the-board state employee pay raise. As hardworking Kansans face record inflation and skyrocketing costs, lawmakers should refrain from profligate spending measures and using federal dollars to create artificial baselines guaranteed to lead to future burdens

ABOUT THE FOUNDATION

METHODOLOGY
2022 KANSAS

KANSAS
SENATE
SNAPSHOT

KANSAS
SENATE
VOTES

KANSAS
SENATE
VOTE
DESCRIPTIONS

KANSAS
HOUSE
SNAPSHOT

KANSAS
HOUSE
VOTES

KANSAS
HOUSE
VOTE
DESCRIPTIONS



Kansas 2022 | House Vote Descriptions

on taxpayers. The Kansas House passed the bill, 104-12, on April 1, 2022. The Kansas Senate passed it, 33-5, on the same day.

SB 267 AMDT

HELGERSON AMENDMENT EXPANDING MEDICAID

(CFGF OPPOSES)

This amendment to SB 267 significantly increases direct spending in the Medicaid program through the enactment of Medicaid expansion. Specifically, this amendment expands Medicaid to able-bodied adults, enrolling potentially 360,000 otherwise healthy adults into a program meant for the indigent. Kansas is one of only 10 remaining states that have rightfully refused to expand Medicaid, which could cost \$14 billion over the next decade and double the number of Kansans enrolled in a program known for high costs, poor health outcomes, and low quality of care. The Kansas House rejected the amendment, 49-72, on March 23, 2022. The Kansas Senate did not take it up.

SB 347

MASSIVE CORPORATE CRONYISM PROGRAM

(CFGF OPPOSES)

This bill creates a series of new crony incentives to lure specific manufacturing, aerospace, and distribution businesses to Kansas. Specifically, the legislation provides for a new investment tax credit equal to 15 percent of a qualified business' investments up to a maximum of \$100 million. Approval of the credit is put in the hands of the Governor and State Finance Council. Additionally, the bill provides the Commerce Secretary with the authority to determine the percentage of the credit that is refundable. Furthermore, the bill allows corporations to retain 65 percent of Kansas payroll withholding taxes for up to a decade, apply for payroll reimbursement, and lowers the state's corporate tax rate for eligible entities down to zero. This is pure cronyism aimed at using the resources of hard-working Kansans for the benefit of a handful of well-connected business interests. The Kansas House passed it, 80-41, on February 8, 2022. The Kansas Senate passed it, 31-9, on February 9, 2022.

HCR 5014

REGULATORY REFORM CONSTITUTIONAL AMENDMENT

(CFGF SUPPORTS)

This resolution amends the Kansas Constitution to provide for the state legislature to repeal agency regulations. Specifically, the resolution allows an agency regulation or rule to be repealed or suspended with a simple majority vote in each legislative chamber. Conceptually similar to the federal REINS Act proposal, this amendment provides an important check on state agencies should they attempt to impose onerous regulations outside or within the confines of statutory law. The Kansas House passed the resolution, 85-39, on February 21, 2022. The Kansas Senate passed it, 27-12, on March 23, 2022.

ABOUT THE FOUNDATION

METHODOLOGY 2022 KANSAS

KANSAS SENATE SNAPSHOT

KANSAS SENATE VOTES

KANSAS SENATE VOTE DESCRIPTIONS

KANSAS HOUSE SNAPSHOT

KANSAS HOUSE VOTES

KANSAS HOUSE VOTE DESCRIPTIONS

